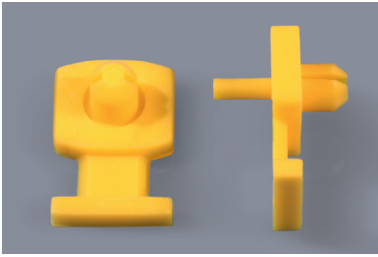
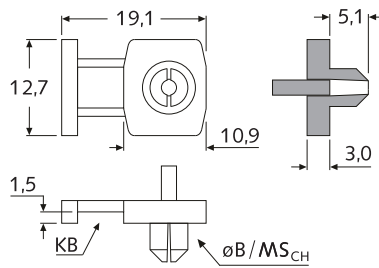


■ Kabelbinder-Montagesockel



$B_{CH} = \varnothing 5,0$
 $MS_{CH} = 0,8-3,2$

Montagesockel, mit Spreizniete (FTH-22)

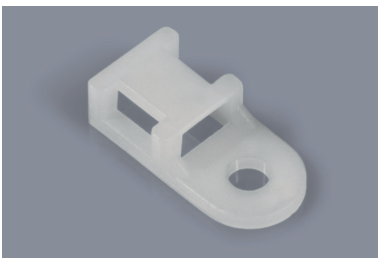


Artikel-Nr.	Artikel-Bez.	KB max.	
34500	FTH-22-N natur	4,8	<input type="checkbox"/>
09416	FTH-22-G gelb	4,8	<input type="checkbox"/>

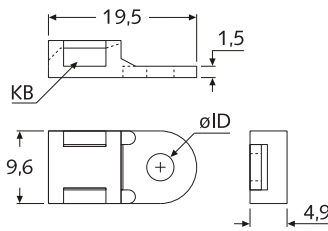
Maße in mm / VPE 100 St.

Material: PA, natur/gelb - UL-94 V-2, -40°C bis +75°C

■ Kabelbinder-Montagesockel



Montagesockel, schraubbar (FTH-02)

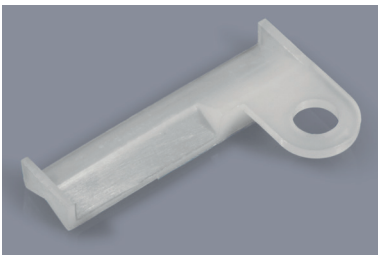


Art.-Nr. natur	Artikel-Bez.	ID Ø	KB max.	
17342	FTH-02-N-M3,5	3,6	5,5	<input type="checkbox"/>
39165	FTH-02-S-M4-5*	4,3	5,0	<input checked="" type="checkbox"/>
18622	FTH-02-N-M4-1*	4,4	5,0	<input type="checkbox"/>
35050	FTH-02-N-M6*	6,5	5,0	<input type="checkbox"/>

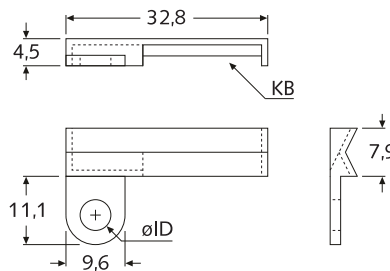
Maße in mm / VPE 100 St.

* Zeichnung leicht abweichend
Material: PA, natur / schwarz
UL-94 V-2, -40°C bis +75°C

■ Kabelbinder-Montagesockel



Montagesockel, schraubbar (FTH-11)

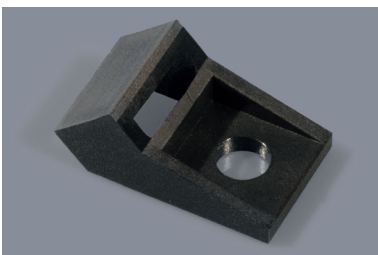


Art.-Nr. natur	Artikel-Bez.	ID Ø	KB max.	
02682	FTH-11-08-01	4,3	4,8	<input type="checkbox"/>
16077	FTH-11-10-01	5,0	4,8	<input type="checkbox"/>

Maße in mm / VPE 100 St.

Material: PA, natur - UL-94 V-2, -40°C bis +75°C

■ Kabelbinder-Montagesockel

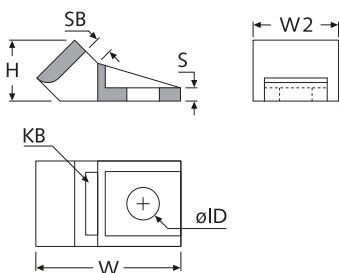


Art.-Nr. schwarz	Artikel-Bez.	KB max.	ID Ø	SB	S	H	W	W2	
18623	FTH-02-S-M4-45°	8,3	4,2	2,5	1,8	8,0	19,0	11,3	<input checked="" type="checkbox"/>
18624	FTH-02-S-M5-X-45°	12,3	5,2	1,6	1,7	5,7	23,5	16,3	<input checked="" type="checkbox"/>
22460	FTH-02-S-M8-45°	16,7	8,4	2,3	2,5	10,3	27,4	21,4	<input checked="" type="checkbox"/>

Maße in mm / weitere Abmessungen auf Anfrage / VPE 100 St.

Material: PA, schwarz - UL-94 V-2, -40°C bis +75°C (UV-beständig)

Montagesockel, schraubbar (FTH-02-S)



Tabellenlegende

- B: Bohrung
- H: Höhe
- ID: Innendurchmesser
- KB: Kabelbinderbreite
- MS: Materialstärke
- S: Stärke
- SB: Schlitzbreite
- W: Weite